

New Bedford Study

May/June

August/September

2008

Table 2

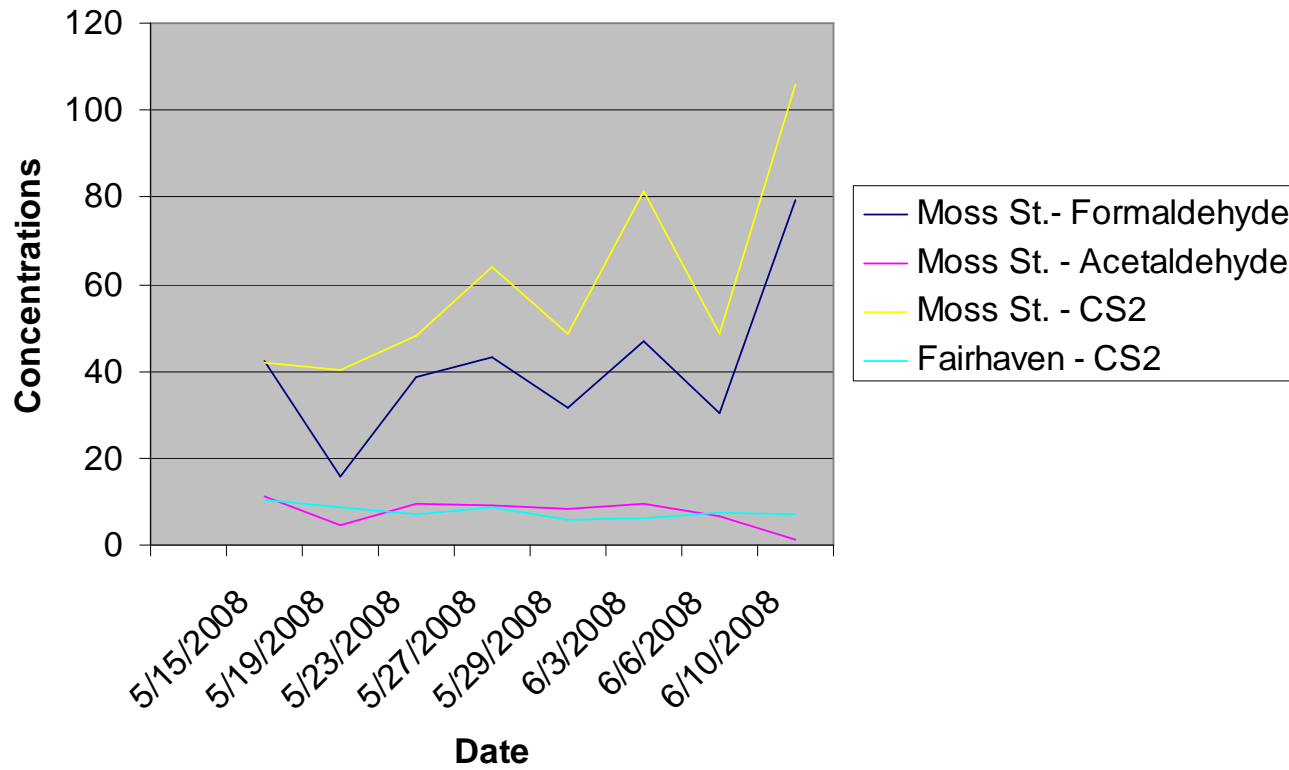
Target Compound	Millbury 1	Millbury 2	Moss Street	Fairhaven	Roxbury (2007)	Lynn (2007)
Benzene	0.24	0.23	0.31	0.16	0.3	0.18
Toluene	0.96	0.91	0.28	0.17	0.95	0.3
Xylenes	0.26	0.23	0.21	0.26	0.4	0.15

Target Compound	Millbury 1	Millbury 2	Moss Street	Fairhaven	Roxbury (2007)	Lynn (2007)
1,3 Butadiene					0.05	0.028
Acrolein	0.95	2.2	1.45	0.5	0.17	0.16
Carbon disulfide	0.08	0.08	59.8	7.68	0.022	0.018
Carbon tetrachloride	0.1	0.11	0.12	0.13	0.09	0.051
Chloromethane	0.72	0.79	0.73	0.03	0.565	0.56
Dichlorodifluoromethane	0.54	0.54	0.56	0.57	Not Rec	
Dichloromethane	0.11	0.1	0.1	0.09	0.104	0.078
Methyl ethyl ketone	0.47	0.43	0.36	0.36	0.331	0.33
Tetrachloroethylene	0.11	0.49	0.33	0.05	0.03	0.02
Acrylonitrile	0.72	0.72	0.22	0.36	0.154	0.205
Trichlorofluoromethane	0.25	0.25	0.25	0.26	Not Rec	
Trichloroethylene					0.004	0.002
Formaldehyde	1.41	1.34	41	2.39	2.64	1.85
Acetaldehyde	1.57	1.23	7.52	1.05	1.74	1.77

Maxes

	Milbury St 1	Milbury St 2	Moss Street	Fairhaven	Roxbury Max (2007)	Lynn Max (2007)
Target Compound	Max/Max Date	Max/Max Date	Max/Max Date	Max/Max Date		
Acrolein	2.2 (6/3)	13.3 (6/10)	2.12 (6/3)	0.82 (6/3)	0.34	0.32
Carbon tetrachloride	0.16 (5/15)	0.133 (5/27)	0.163 (5/27)	0.17 (5/27)	0.114	0.115
Carbon Disulfide	0.17 (6/10)	0.259 (6/10)	106 (6/10)	10.4 (5/15)	0.152	0.109
Chloromethane	0.79 (6/10)	1.44 (6/10)	0.866 (5/27)	0.837 (5/27)	0.63	0.621
Dichlorodifluoromethane	0.6 (5/23)	0.616 (6/6)	0.613 (5/27)	0.639 (5/27)		
Dichloromethane	0.141 (5/15)	0.11 (5/27)	0.195 (5/19)	0.143 (6/3)	0.385	0.574
Methyl ethyl ketone	1.45 (6/10)	0.83 (6/10)	0.915 (6/10)	0.447 (6/10)	2.72	1.02
Tetrachloroethylene	0.56 (5/15)	3.78 (5/19)	2.47 (5/19)	0.155 (6/3)	0.147	0.081
Acrylonitrile	1.04 (6/3)	2.35 (6/10)	0.292 (5/15)	0.419 (6/6)	0.414	1.64
Trichlorofluoromethane	0.269 (6/6)	0.269 (5/19)	0.276 (6/3)	0.296 (5/23)		
Trichloroethylene	Not Detected	Not Detected	Not Detected	Not Detected	0.032	0.019
Formaldehyde	3.13 (6/10)	3.1 (6/10)	79.2 (6/10)	3.61 (6/3)	9.8	10.1
Acetaldehyde	2.35 (5/15)	2.2 (6/10)	11.2 (5/15)	1.78 (6/3)	4.1	4.5

Moss Street Artifacts



Hydrocarbons

Location	Average n-Decane	Maximum n-Decane	Average n-Undecane	Maximum n-Undecane	Average n-Dodecane
----------	---------------------	---------------------	-----------------------	-----------------------	-----------------------

Milbury St. - Complete	1.18	7.23	6.36	27.3	2.53
Lynn (Summer Hourly)	0.03	0.44	0.03	0.17	
Lynn (24 hour Yearly)	0.03	0.28	0.03	0.21	
Newbury (Summer Hourly)	0.01	0.59	0.01	0.17	
Blue Hill – Milton (Summer, 3 hour)	0.02	0.09	0.02	0.22	
Boston- Long Island (Summer, 3 hour)	0.03	0.15	0.03	0.13	
Boston – Roxbury (24 hour Yearly)	0.04	0.12	0.04	0.32	

Milbury HCs vs Moss Formaldehyde/CS2

