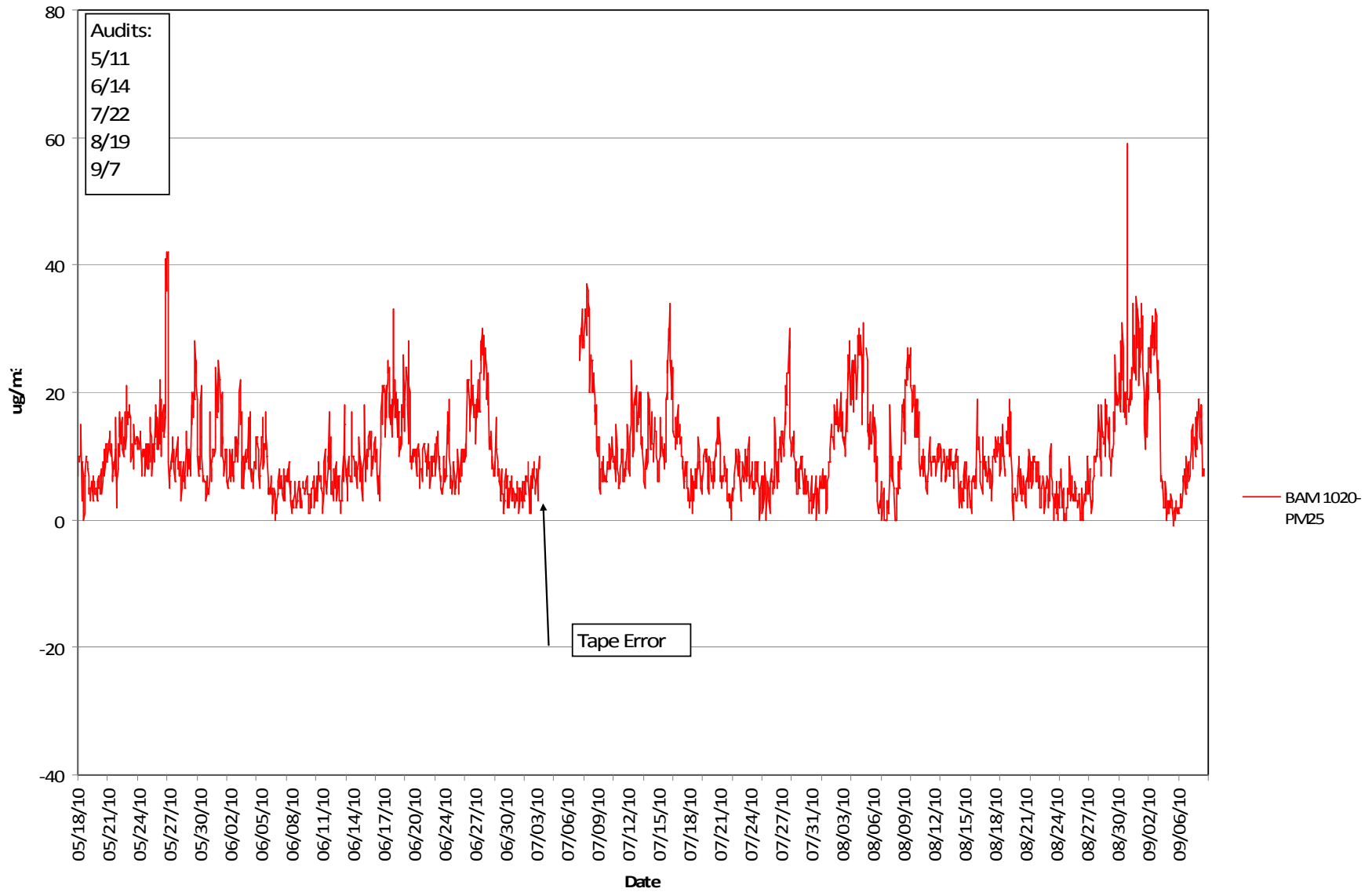


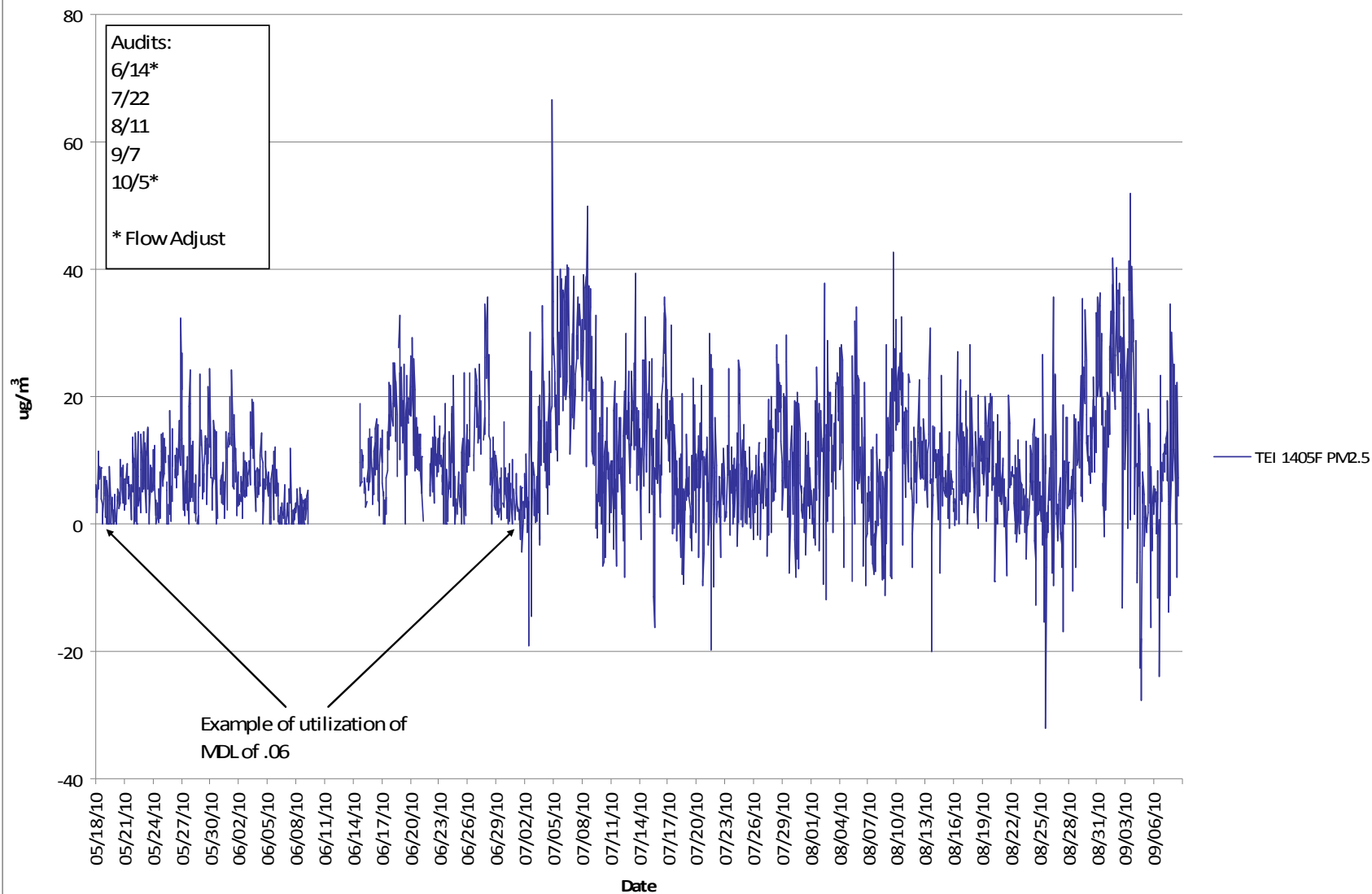
Rutland, Vermont TEI 1405F & MetOne BAM 1020 Preliminary Data Summary

Presented to NESCAUM MAC
10/28/10

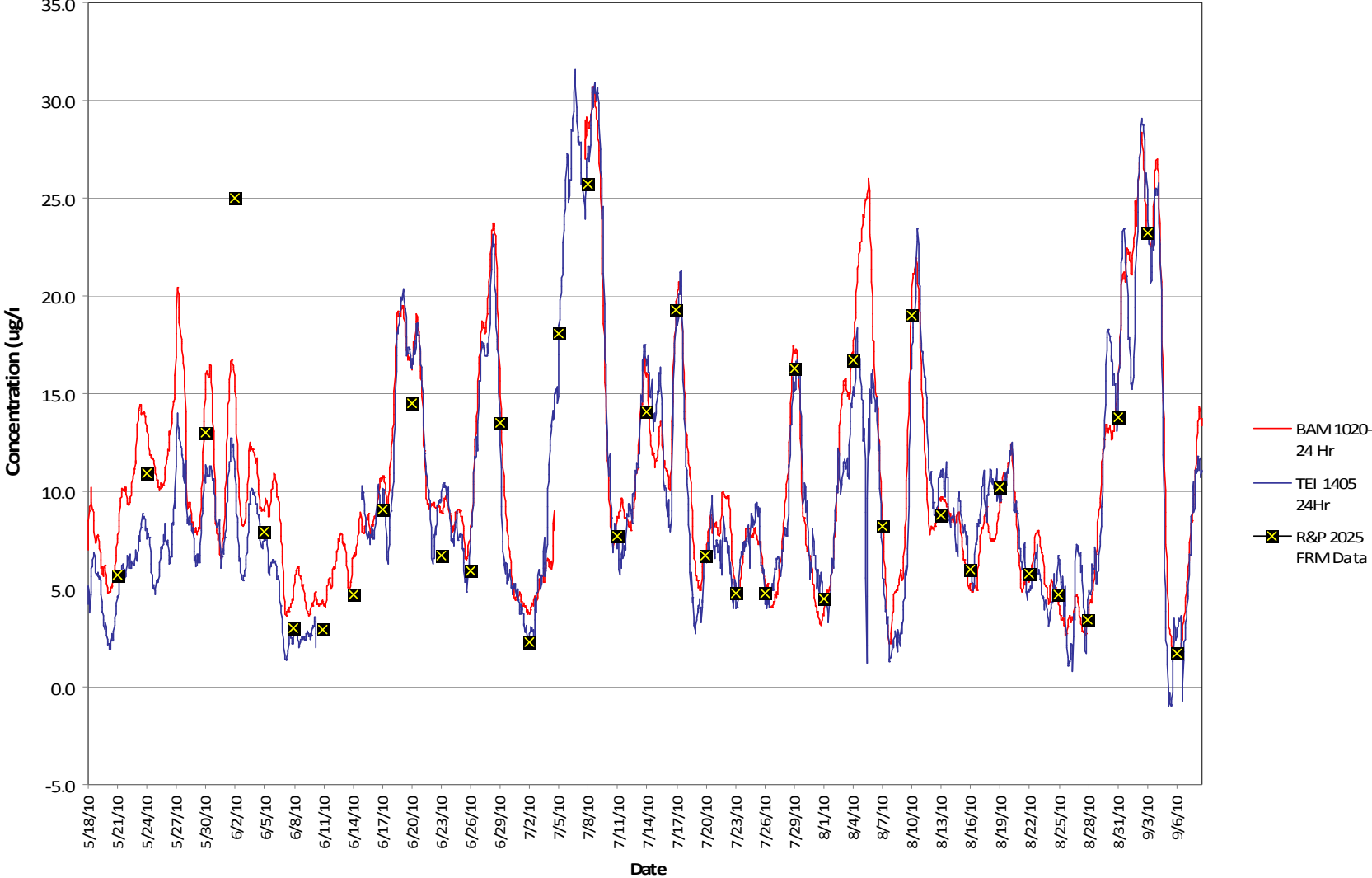
Rutland BAM 1020- Hourly PM2.5 Concentration



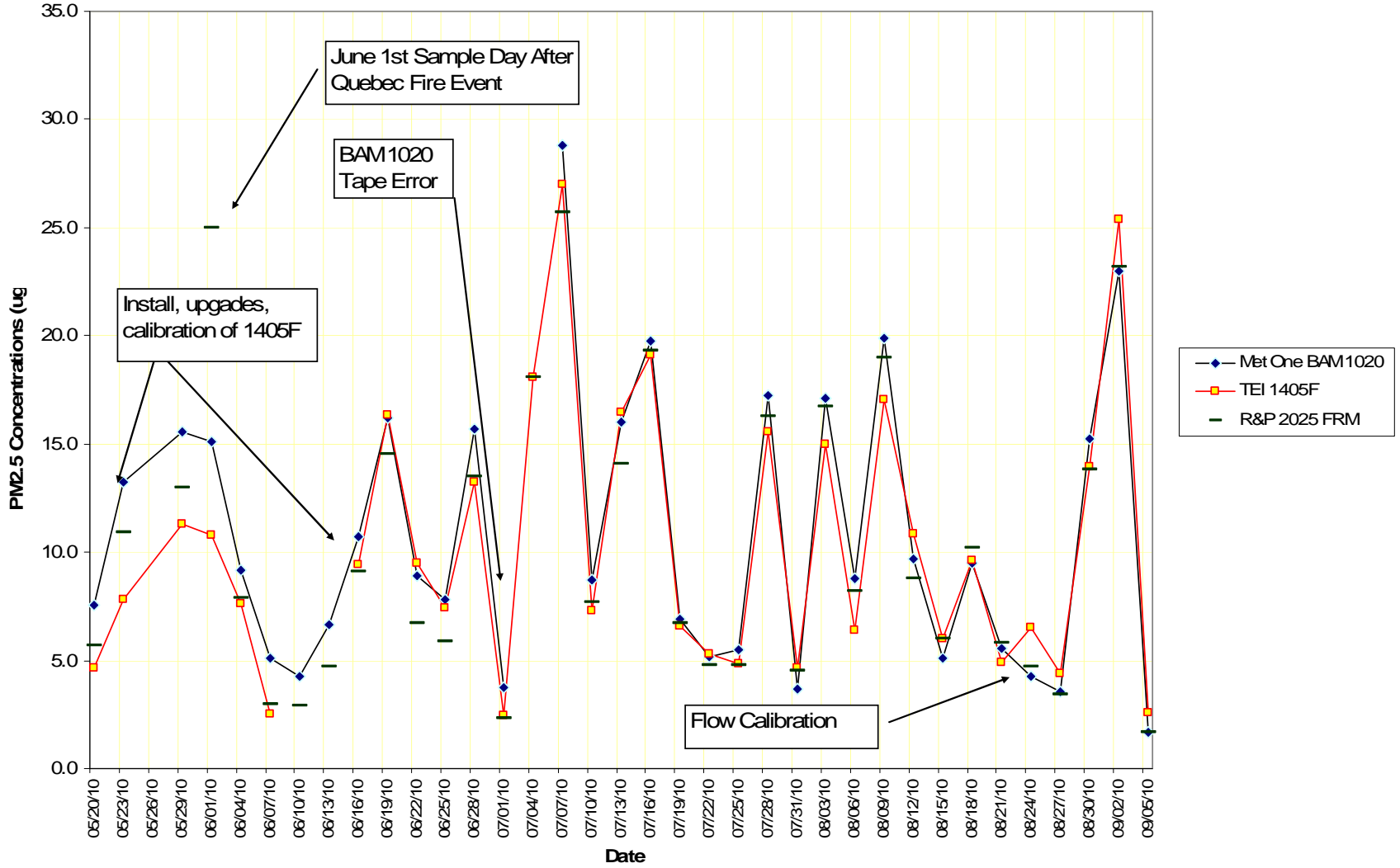
Rutland 1405F Hourly PM2.5 Concentrations



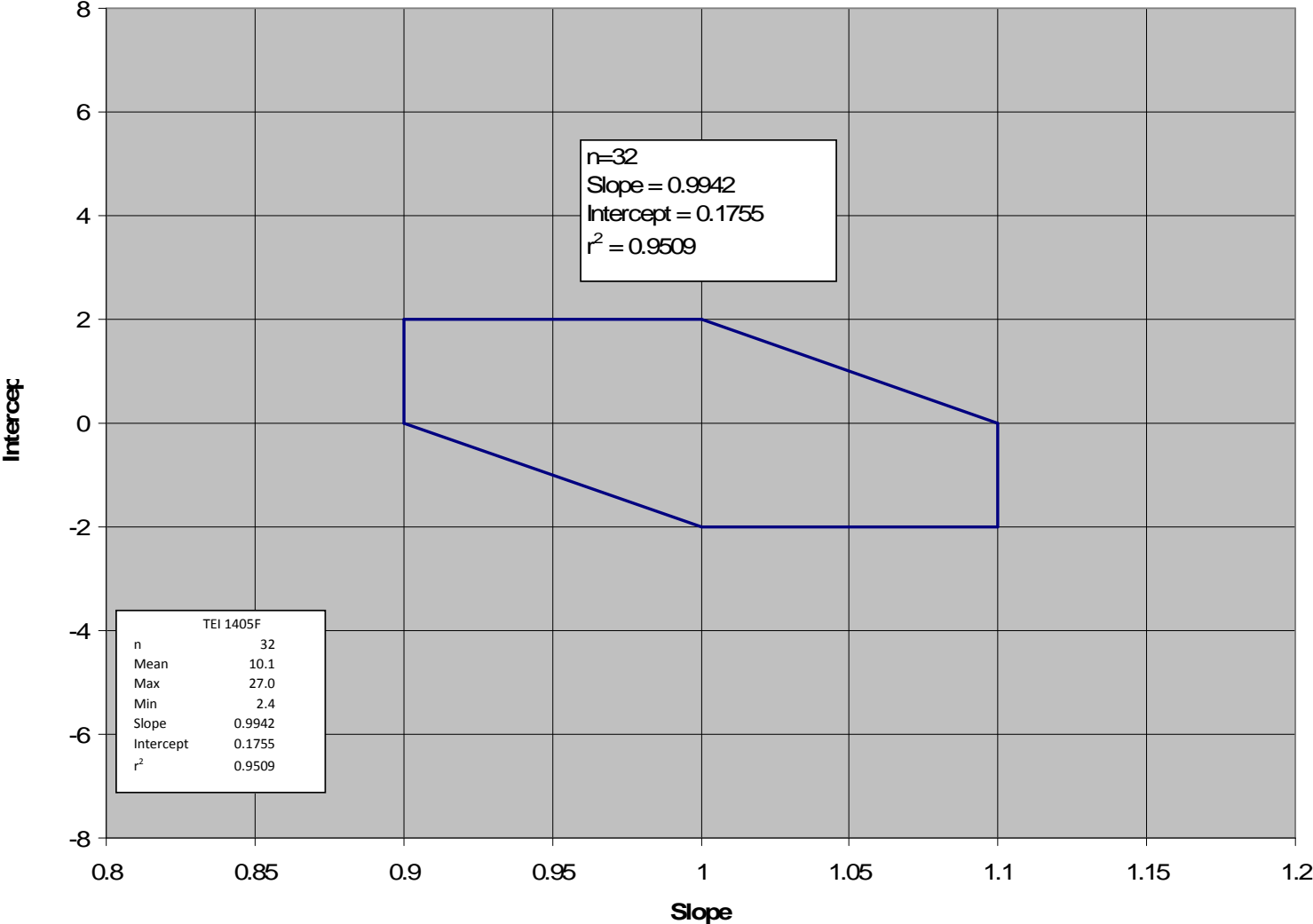
Rutland BAM 1020 & TEI 1405F 24 Hour Averages



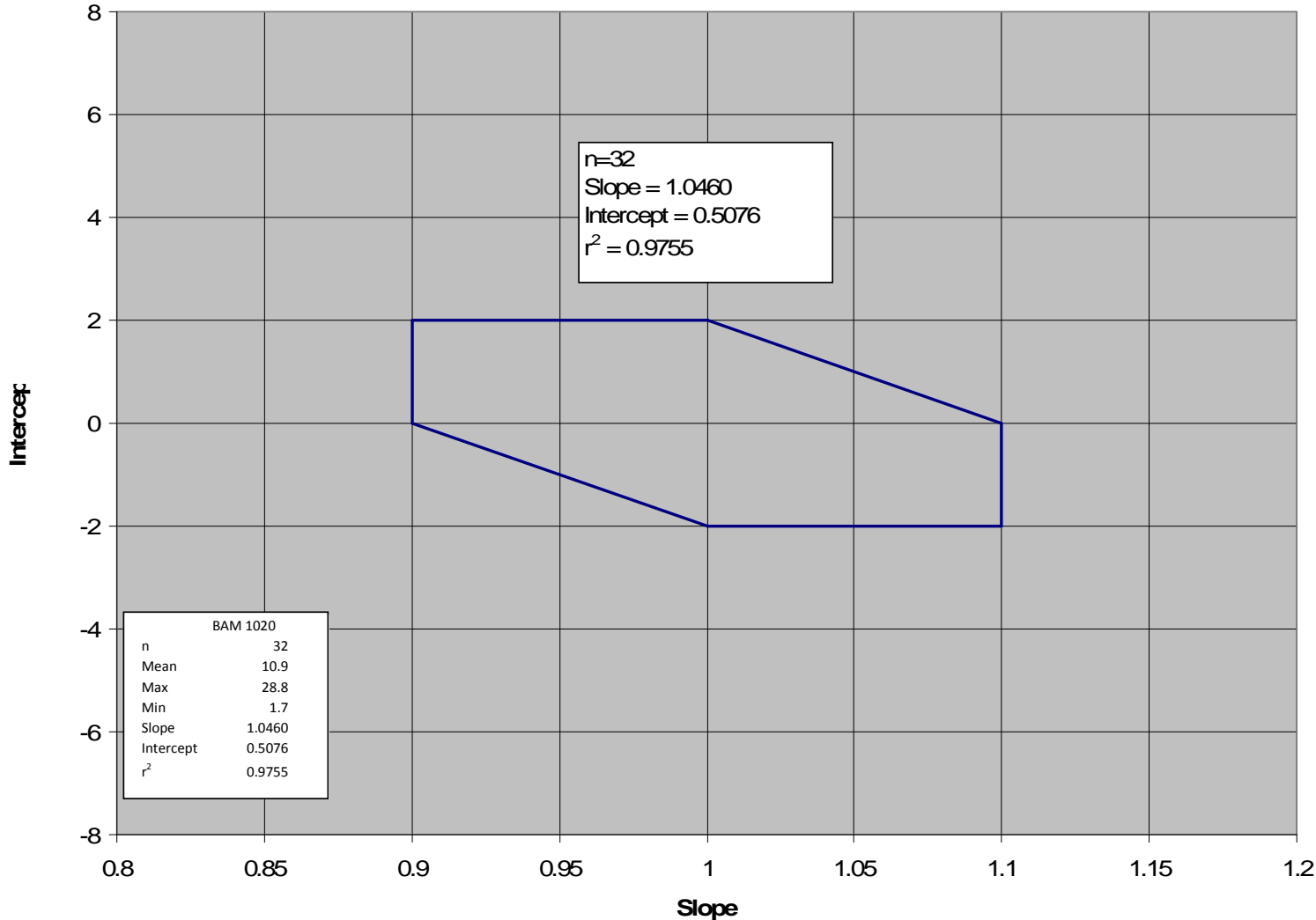
Rutland, VT 24 Hour Met One BAM 1020 FEM & TEI 1405F FEM vs R&P 2025 FRM Concentration Summary



Rutland TEI 1405F FEM Test



Rutland BAM 1020 FEM Test



TEI 1405F Findings So Far...

- Need Seasonal Data
- Hourly Data unusable / difficult to validate
- 1405F Firmware / System Upgrades continue
- Audits show some flow drift
- 24 Hr Data looks OK
- FEM matrix test passed
- Need TEI to look at data & unit

MetOne BAM 1020 Findings

- Need Seasonal data
- Data acquisition is not plug and play
- Have to wait for hourly data output
- Tape changes can create issue
- Flow audits are looking good
- Hourly data useable
- 24 Hour data compares well with FRM